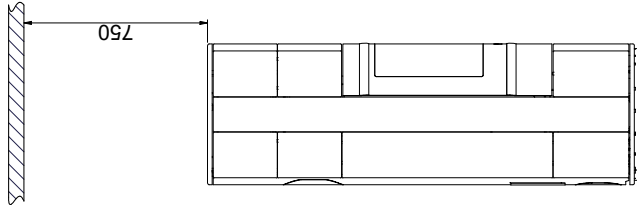
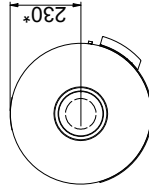
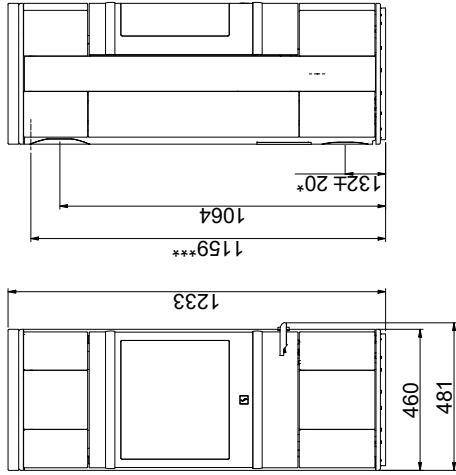


DIMENSION SKETCH AND MINIMUM DISTANCES

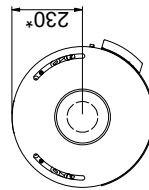
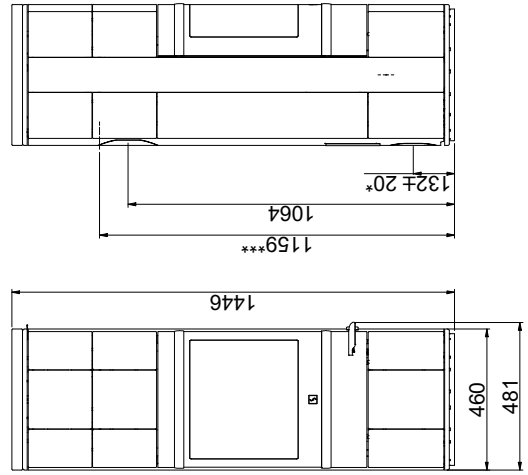
Flammable ceiling
(All models)



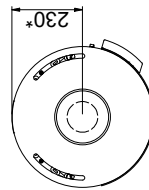
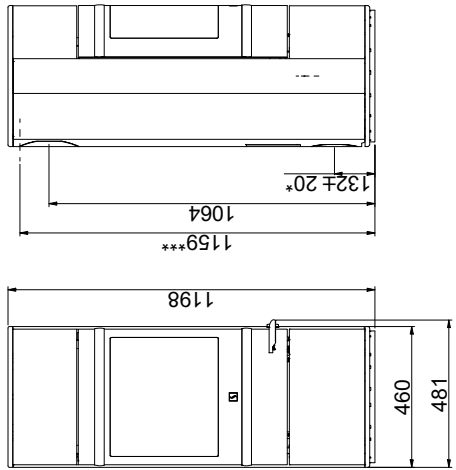
Scan 83-5 and Scan 83-6



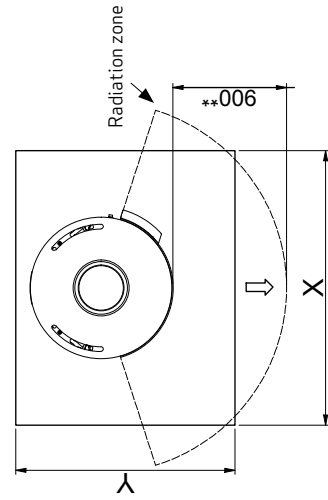
Scan 83-7 and Scan 83-8



Scan 83-1 and Scan 83-2



Floor plate



X / Y according to national laws and regulations



Flammable material

All distances are in mm.
 All distances are minimum distances
 * Connection of fresh-air intake - external diameter Ø 100 mm
 ** Min. distance to furniture/flammable material
 *** Height to the beginning of flue connecting piece at top outlet