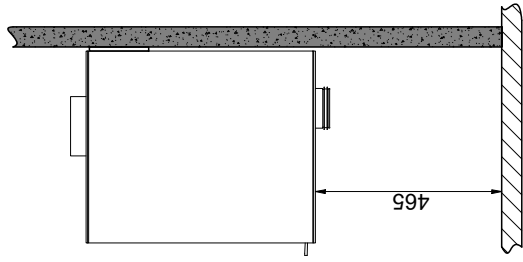
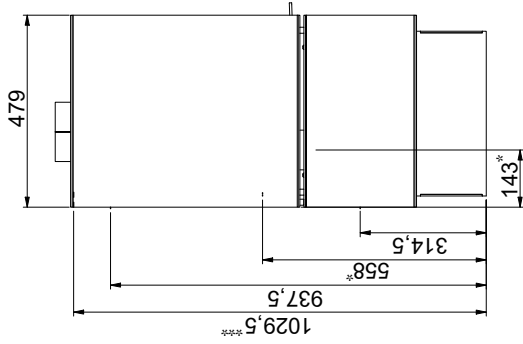


DIMENSION SKETCH AND MINIMUM DISTANCES

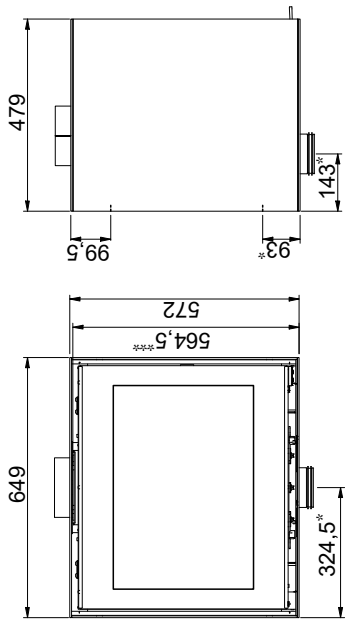
Combustible floor



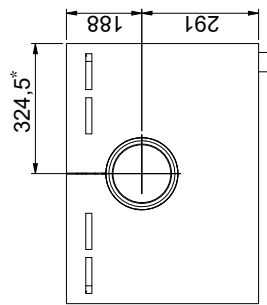
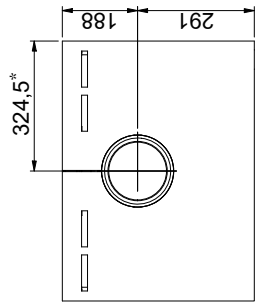
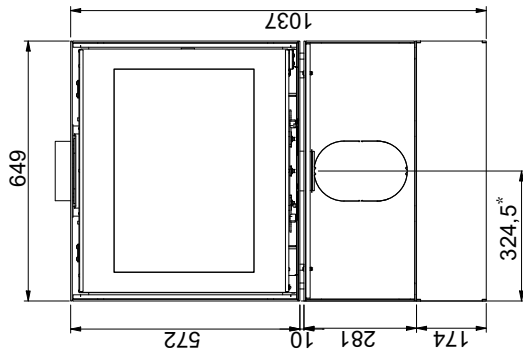
Scan 1003-B with plinth



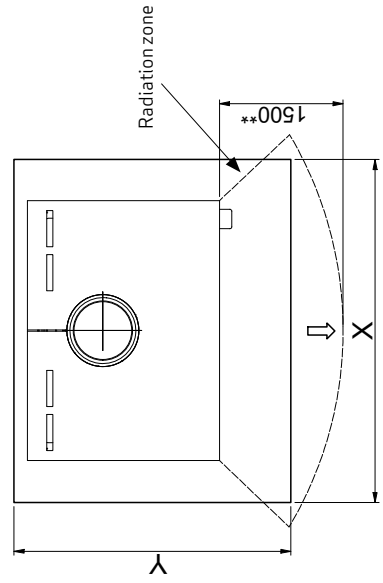
Scan 1003-B



Scan 1003-B with plinth



Floor plate



X / Y according to national laws and regulations



Flammable material



Fire wall, e.g. 50 mm Jøtul Firewall, 110 mm brick or other material with corresponding fireproof and insulating abilities

All distances are in mm.

All distances are minimum distances

\* Connection of fresh-air intake Ø 100 mm

\*\* Min. distance to furniture/flamable material

\*\*\* Height to the beginning of flue connecting piece at top outlet